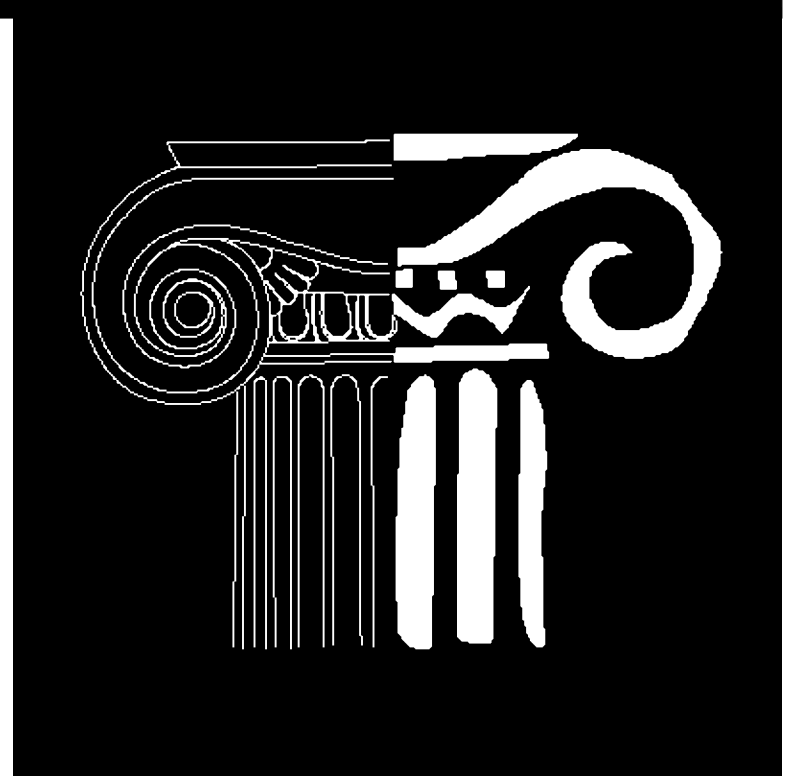


Project:
EARLY COUNTY COURTHOUSE,
RENOVATIONS, BLAKELY, GEORGIA -
1818

Index of Drawings:

- A1 - SITE PLAN
- A2 - FIRST FLOOR PLAN
- A3 - EXTERIOR ELEVATIONS
- A4 - DOME ENLARGEMENTS
- A5 - ROOF PLAN
- A6 - PHOTOS



Owner:
EARLY COUNTY BOARD OF COMMISSIONERS,
204 COURT SQUARE, BLAKELY, GEORGIA 39823

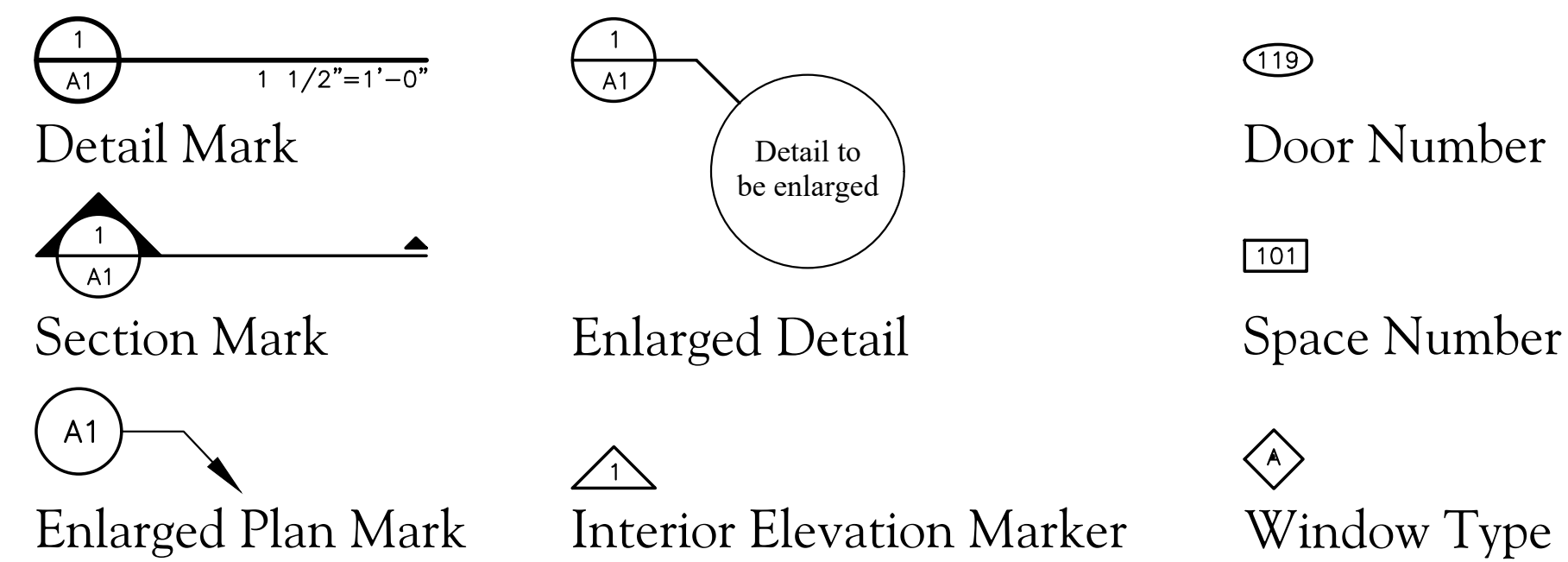
SRJ Architects Inc.

1108 Maryland Drive, Albany, GA 31707

Ph.: 229.436.9877, Fax: 229.438.0370

Michael A. Johnson, AIA • Bruce W. Richards, AIA • David L. Guerra, AIA
 Sonya D. Spalinger, AIA • Rodney B. Varnadoe, Director

Detail Key Symbols:

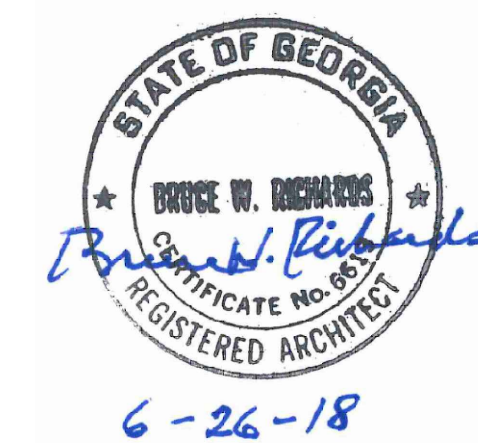


Material Symbols:

| | | |
|----------------------|-----------------------|-----------------------------|
| CONCRETE (SECTION) | ROUGH FRAMING CONT. | GYPSUM SHEATHING |
| CONCRETE (PLAN VIEW) | SOLID FINISH WOOD | PLASTER / STUCCO |
| MORTAR/ GROUT | PLYWOOD | EARTH |
| SAND | ACOUSTICAL PANEL | SOUND DEADENING BOARD |
| P.E.J./ BACKING ROD | CMU/ TILE | E.I.F.S. / RIGID INSULATION |
| METAL | FIBERGLASS INSULATION | BRICK |
| METAL | WEEP | SHEATHING/INSULATION |
| ROUGH BLOCKING | GYPSUM BOARD | EXISTING TO BE REMOVED |

THE WORK DESCRIBED IN THESE DOCUMENTS FOR THIS FACILITY WAS DESIGNED IN ACCORDANCE WITH:

- NFPA 101 – LIFE SAFETY CODE, 2012 EDITION.
- ADA STANDARD FOR ACCESSIBLE DESIGN, 2010 EDITION (NO GEORGIA AMENDMENTS)
- GA. ACCESSIBILITY CODE(GAC 120-3-20), 2010 EDITION (1-1-2015)
- INTERNATIONAL BUILDING CODE, 2012 EDITION, WITH GEORGIA AMENDMENTS (2014)(2015)(2017)(2018)
- INTERNATIONAL FIRE CODE, 2012 EDITION, WITH GEORGIA AMENDMENTS (2014)
- INTERNATIONAL PLUMBING CODE, 2012 EDITION, WITH GEORGIA AMENDMENTS (2014)(2015)
- INTERNATIONAL MECHANICAL CODE, 2012 EDITION, WITH GEORGIA AMENDMENTS (2014)(2015)
- NATIONAL ELECTRICAL CODE, 2017 EDITION (NO GEORGIA AMENDMENTS)
- INTERNATIONAL ENERGY CONSERVATION CODE, 2009 EDITION W/ GA. AMENDMENTS (2011)(2012)



1818

EARLY COUNTY
 COURTHOUSE, RENOVATIONS,
 BLAKELY, GEORGIA - 1818

Set No.



SRJ Architects Inc.

1108 Maryland Drive
Albany, Georgia 31707

Phone 229-436-9877
Fax 229-438-0370

www.srjarchitects.com

PROJECT:

EARLY COUNTY
COURTHOUSE
RENOVATIONS,
BLAKELY, GEORGIA - 1818

OWNER:

EARLY COUNTY BOARD
OF COMMISSIONERS,
204 COURT SQUARE,
BLAKELY, GEORGIA 39823



PROJECT NO.:
1818

DATE:
06/22/2018

JOB CAPTAIN:
B. RICHARDS

DRAWN BY:
R. FEAGANS

SHEET NO.:

A1

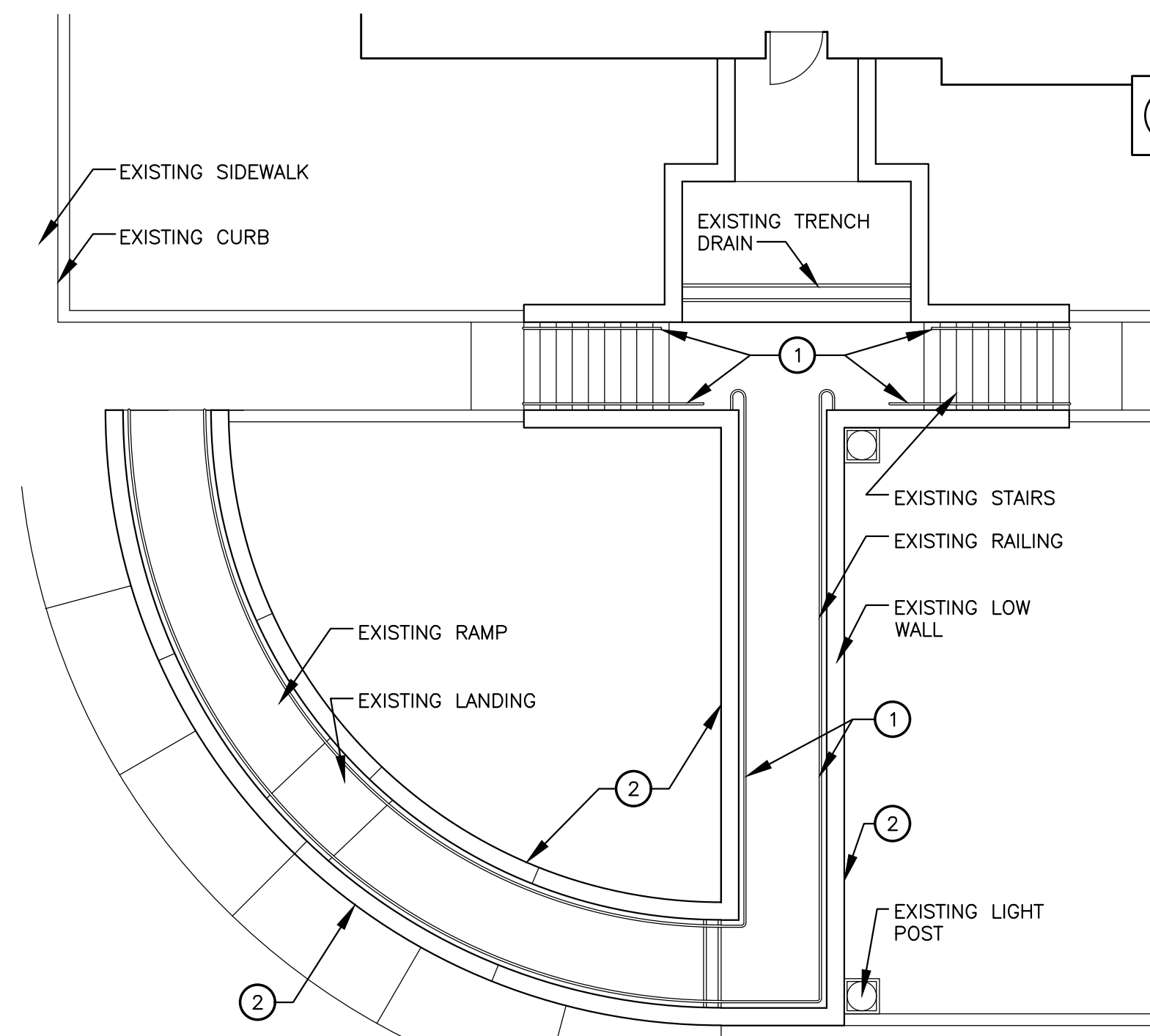
OF 6 SHEETS

GENERAL SITE NOTES:

1. CONTRACTOR SHALL PROTECT THE ENTIRE SITE, INCLUDING BUT NOT LIMITED TO: HVAC EQUIPMENT, MONUMENTS, VEGETATION, WALLS, WALKS, AND BRICK PAVERS FROM DAMAGE BY CONSTRUCTION ACTIVITIES AND EQUIPMENT. DAMAGE CAUSED BY CONTRACTOR SHALL BE REPAIRED AND/OR REPLACED SATISFACTORY TO OWNER AT NO ADDITIONAL COST TO OWNER.

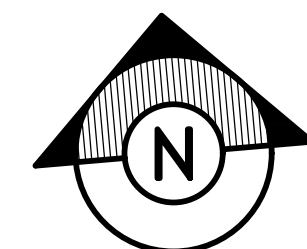
KEY NOTES:

1. PREPARE AND PAINT PREVIOUSLY PAINTING METAL RAILINGS AT STEPS AND RAMPS - TYPICAL.
2. PREPARE AND PAINT ALL PREVIOUSLY PAINTED METAL RAILINGS AT LOW WALLS - TYPICAL.

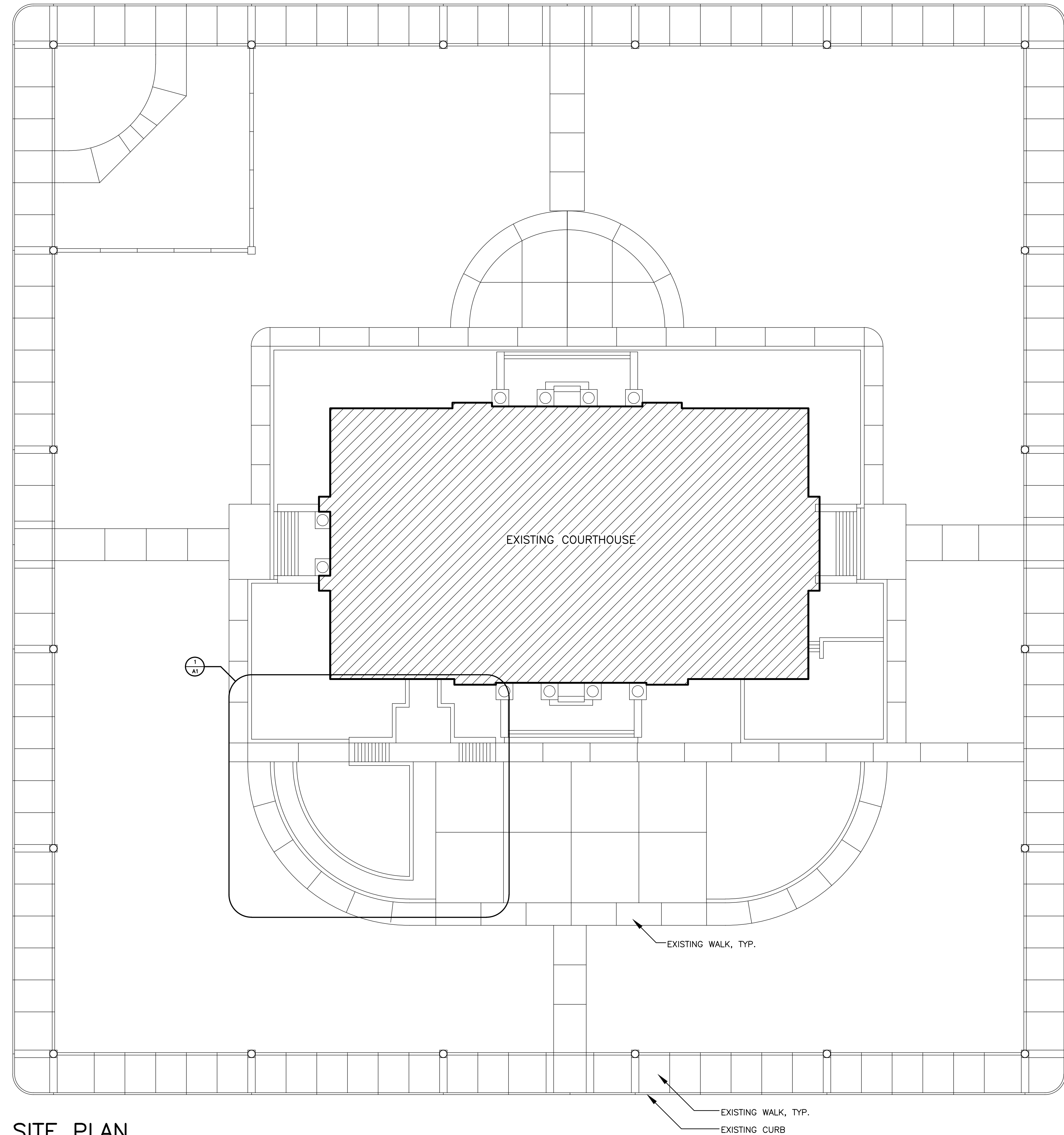


ENLARGED RAMP DETAIL

1/8" = 1'-0"



SITE PLAN



1/16" = 1'-0"



SRJ Architects Inc.

1108 Maryland Drive
Albany, Georgia 31707

Phone 229-436-9877
Fax 229-438-0370

www.srjarchitects.com

PROJECT:

EARLY COUNTY
COURTHOUSE
RENOVATIONS,
BLAKELY, GEORGIA - 1818

OWNER:

EARLY COUNTY BOARD
OF COMMISSIONERS,
204 COURT SQUARE,
BLAKELY, GEORGIA 39823



PROJECT NO.:
1818

DATE:
06/22/2018

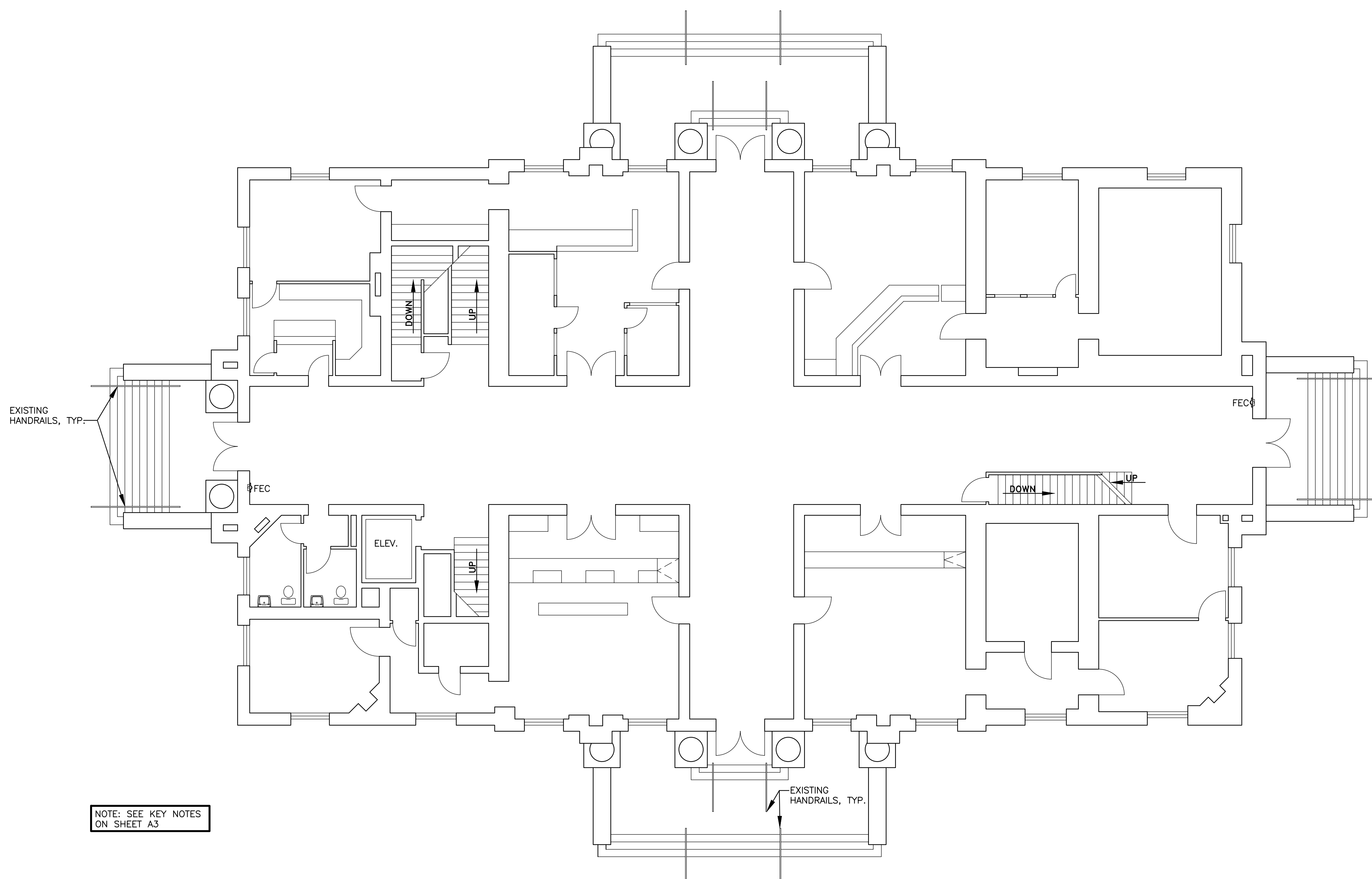
JOB CAPTAIN:
B. RICHARDS

DRAWN BY:
R. FEAGANS

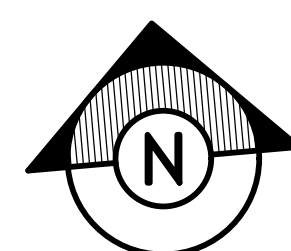
SHEET NO.:

A2

OF 6 SHEETS



NOTE: SEE KEY NOTES
ON SHEET A3



FIRST FLOOR PLAN

1/8" = 1'-0"



SRJ
Architects
Inc.

1108 Maryland Drive
Albany, Georgia 31707

Phone 229-436-9877
Fax 229-438-0370

www.srjarchitects.com

PROJECT:

EARLY COUNTY
COURTHOUSE
RENOVATIONS,
BLAKELY, GEORGIA - 1818

OWNER:

EARLY COUNTY BOARD
OF COMMISSIONERS,
204 COURT SQUARE,
BLAKELY, GEORGIA 39823



PROJECT NO.:
1818

DATE:
06/22/2018

JOB CAPTAIN:
B. RICHARDS

DRAWN BY:
C. NANTZE

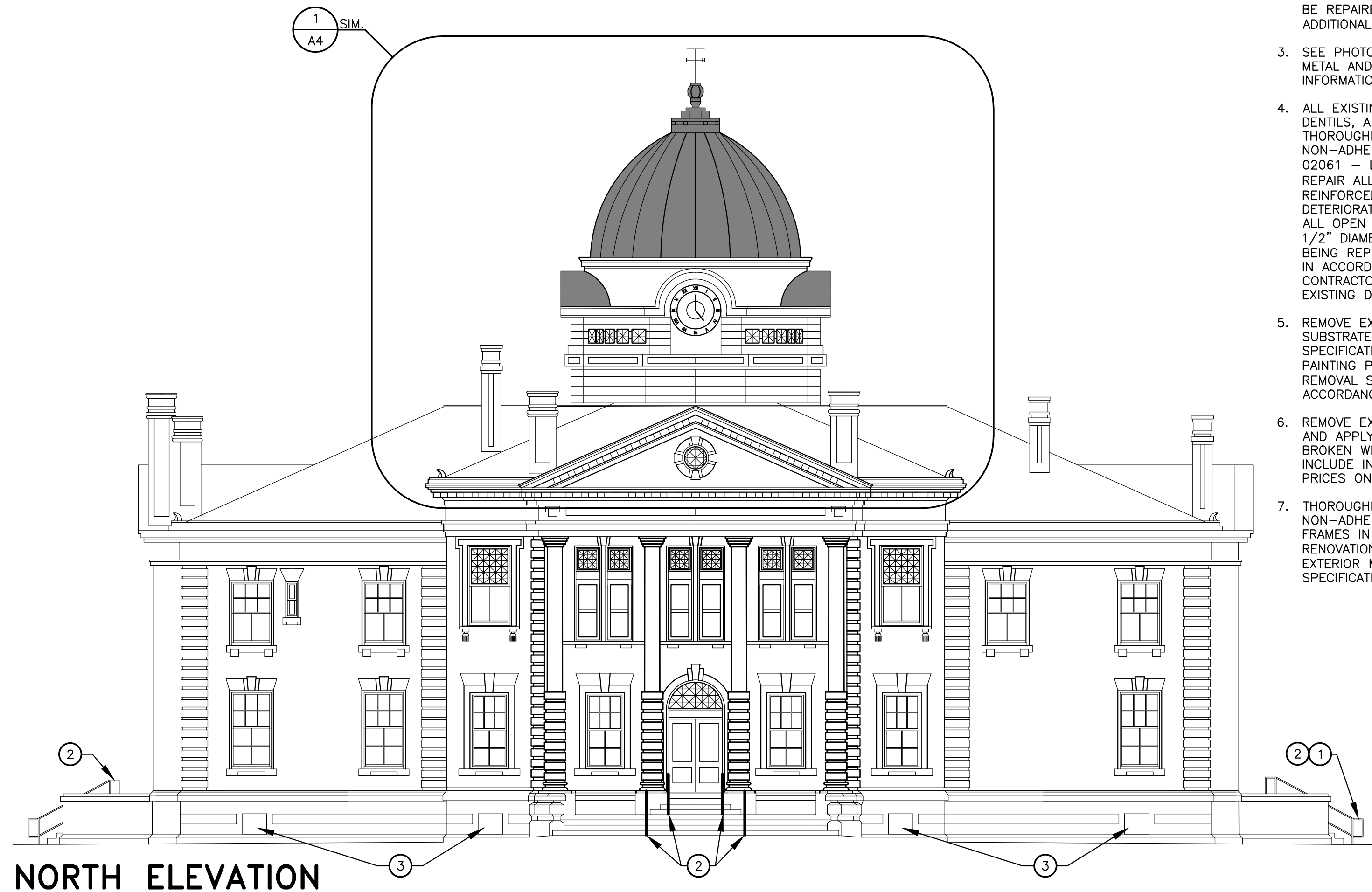
SHEET NO.:

A3

OF 6 SHEETS

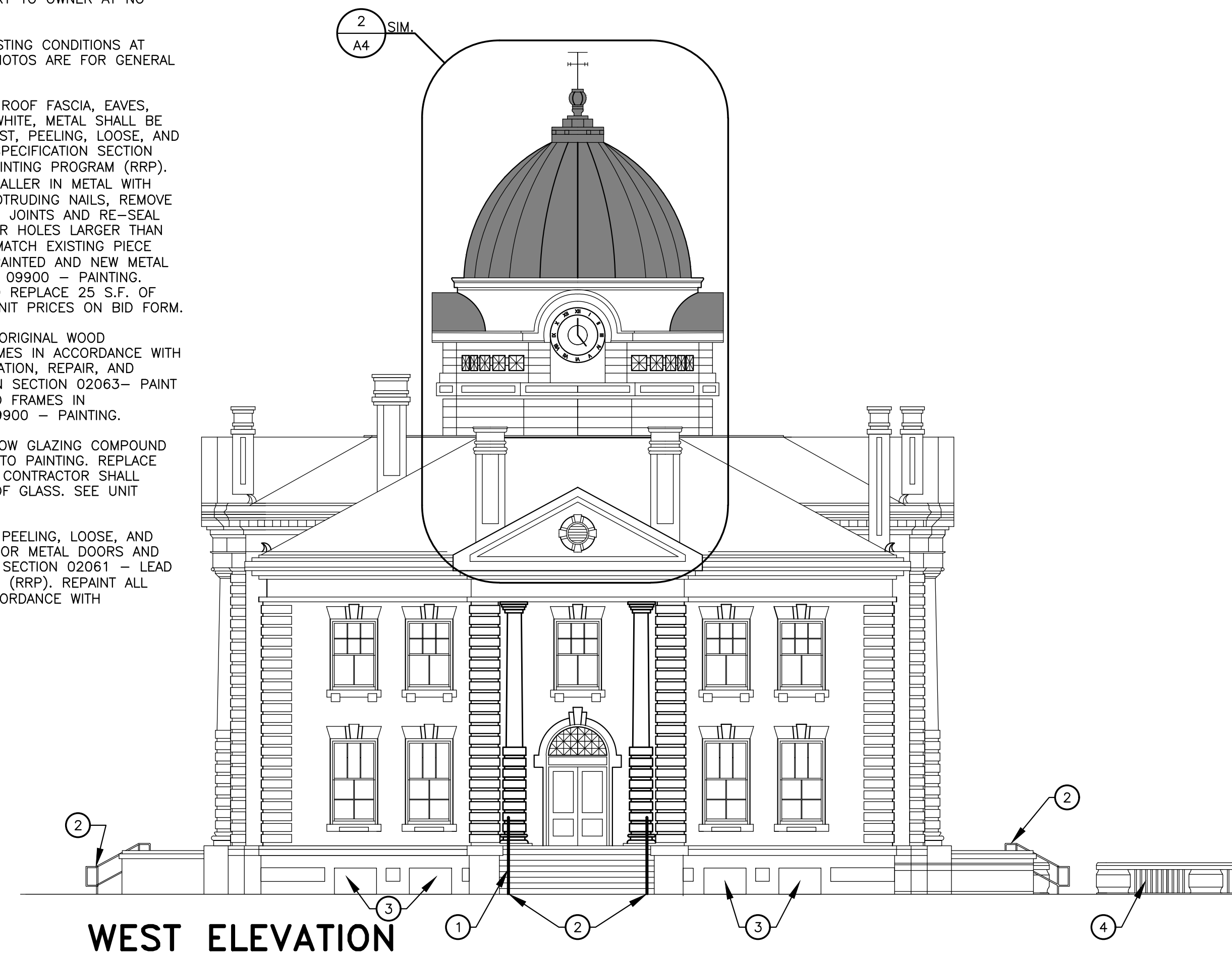
GENERAL NOTES:

1. ALL EXISTING PAINT CONTAINS LEAD. SEE SPECIFICATION SECTION 02061 - LEAD RENOVATION, REPAIR, AND REPAINTING PROGRAM (RRP)
2. CONTRACTOR SHALL PROTECT THE ENTIRE SITE, INCLUDING BUT NOT LIMITED TO; HVAC EQUIPMENT, MONUMENTS, VEGETATION, WALLS, WALKS, AND BRICK PAVERS FROM DAMAGE BY CONSTRUCTION ACTIVITIES AND EQUIPMENT. DAMAGE CAUSED BY CONTRACTOR SHALL BE REPAIRED AND/OR REPLACED SATISFACTORY TO OWNER AT NO ADDITIONAL COST TO OWNER.
3. SEE PHOTOS ON SHEET A6 FOR TYPICAL EXISTING CONDITIONS AT METAL AND WOOD COMPONENT SURFACES. PHOTOS ARE FOR GENERAL INFORMATION ONLY.
4. ALL EXISTING EXTERIOR METAL SURFACES AT ROOF FASCIA, EAVES, DENTELS, AND DOME BASE THAT IS PAINTED WHITE, METAL SHALL BE THOROUGHLY PREPPED BY REMOVING ALL RUST, PEELING, LOOSE, AND NON-ADHERED PAINT IN ACCORDANCE WITH SPECIFICATION SECTION 02061 - LEAD RENOVATION, REPAIR, AND PAINTING PROGRAM (RRP). REPAIR ALL HOLES 1/2" IN DIAMETER OR SMALLER IN METAL WITH REINFORCED BONDLO FILLER. RE-SET ALL PROTRUDING NAILS. REMOVE DETERIORATED SEALANT, TIGHTEN UP EXISTING JOINTS AND RE-SEAL ALL OPEN SEAM EDGES WITH SEALANT. REPAIR HOLES LARGER THAN 1/2" DIAMETER WITH NEW SHEET METAL TO MATCH EXISTING PIECE BEING REPLACED. REPAINT ALL PREVIOUSLY PAINTED AND NEW METAL IN ACCORDANCE WITH SPECIFICATION SECTION 09900 - PAINTING. CONTRACTOR SHALL INCLUDE IN BASE BID TO REPLACE 25 S.F. OF EXISTING DETERIORATED SHEET METAL. SEE UNIT PRICES ON BID FORM.
5. REMOVE EXISTING EXTERIOR PAINT DOWN TO ORIGINAL WOOD SUBSTRATE AT ALL WOOD WINDOWS AND FRAMES IN ACCORDANCE WITH SPECIFICATION SECTION 02061 - LEAD RENOVATION, REPAIR, AND PAINTING PROGRAM (RRP), AND SPECIFICATION SECTION 02063 - PAINT REMOVAL SYSTEM. REPAINT ALL WINDOWS AND FRAMES IN ACCORDANCE WITH SPECIFICATION SECTION 09900 - PAINTING.
6. REMOVE EXISTING CRACKED AND LOOSE WINDOW GLAZING COMPOUND AND APPLY NEW GLAZING COMPOUND PRIOR TO PAINTING. REPLACE BROKEN WINDOW GLASS TO MATCH EXISTING. CONTRACTOR SHALL INCLUDE IN BASE BID TO REPLACE 25 S.F. OF GLASS. SEE UNIT PRICES ON BID FORM.
7. THOROUGHLY PREP BY REMOVING ALL RUST, PEELING, LOOSE, AND NON-ADHERED PAINT AT ALL EXISTING EXTERIOR METAL DOORS AND FRAMES IN ACCORDANCE WITH SPECIFICATION SECTION 02061 - LEAD RENOVATION, REPAIR, AND PAINTING PROGRAM (RRP). REPAINT ALL EXTERIOR METAL DOORS AND FRAMES IN ACCORDANCE WITH SPECIFICATION SECTION 09900 - PAINTING.



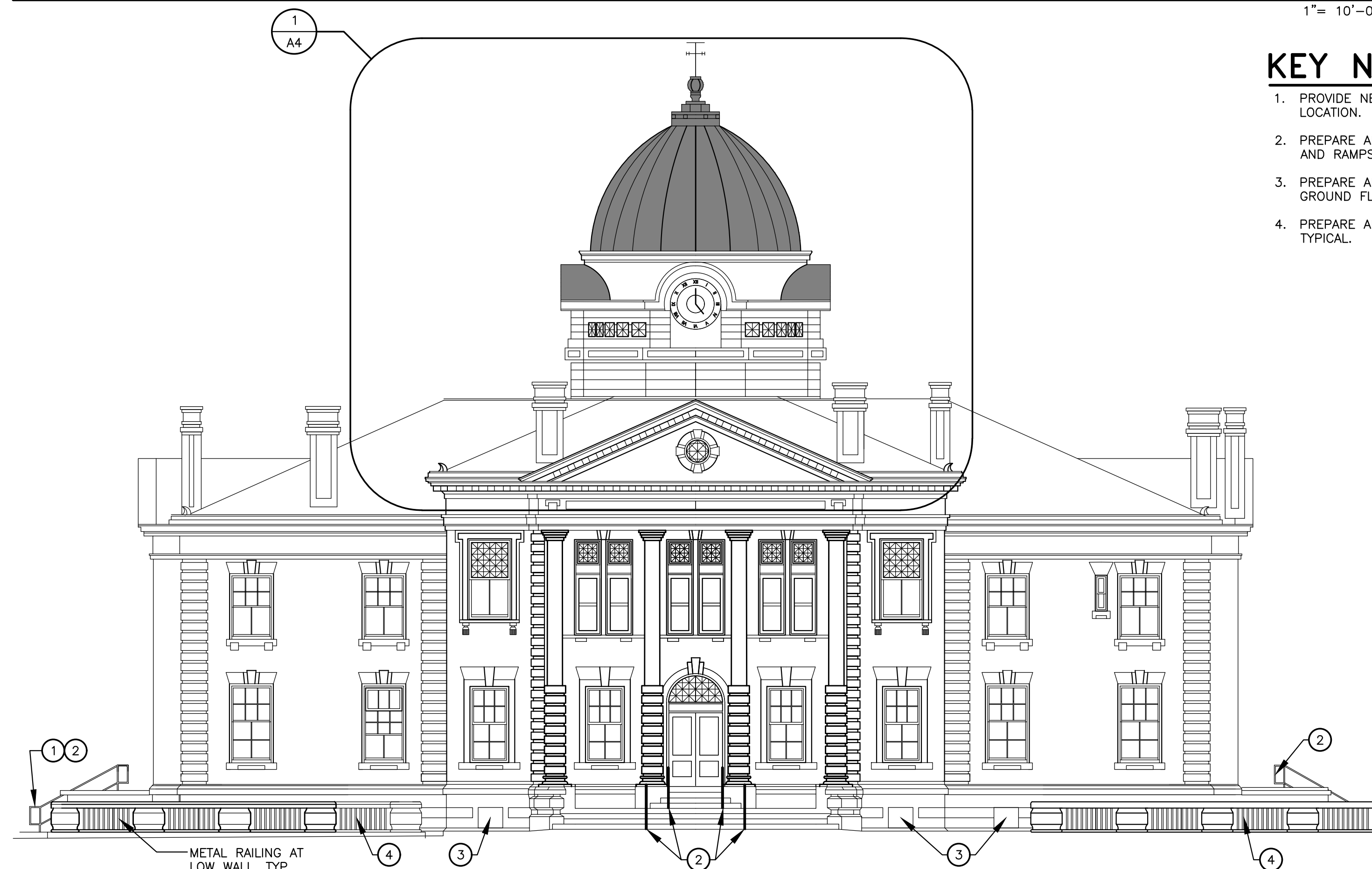
NORTH ELEVATION

1" = 10'-0"



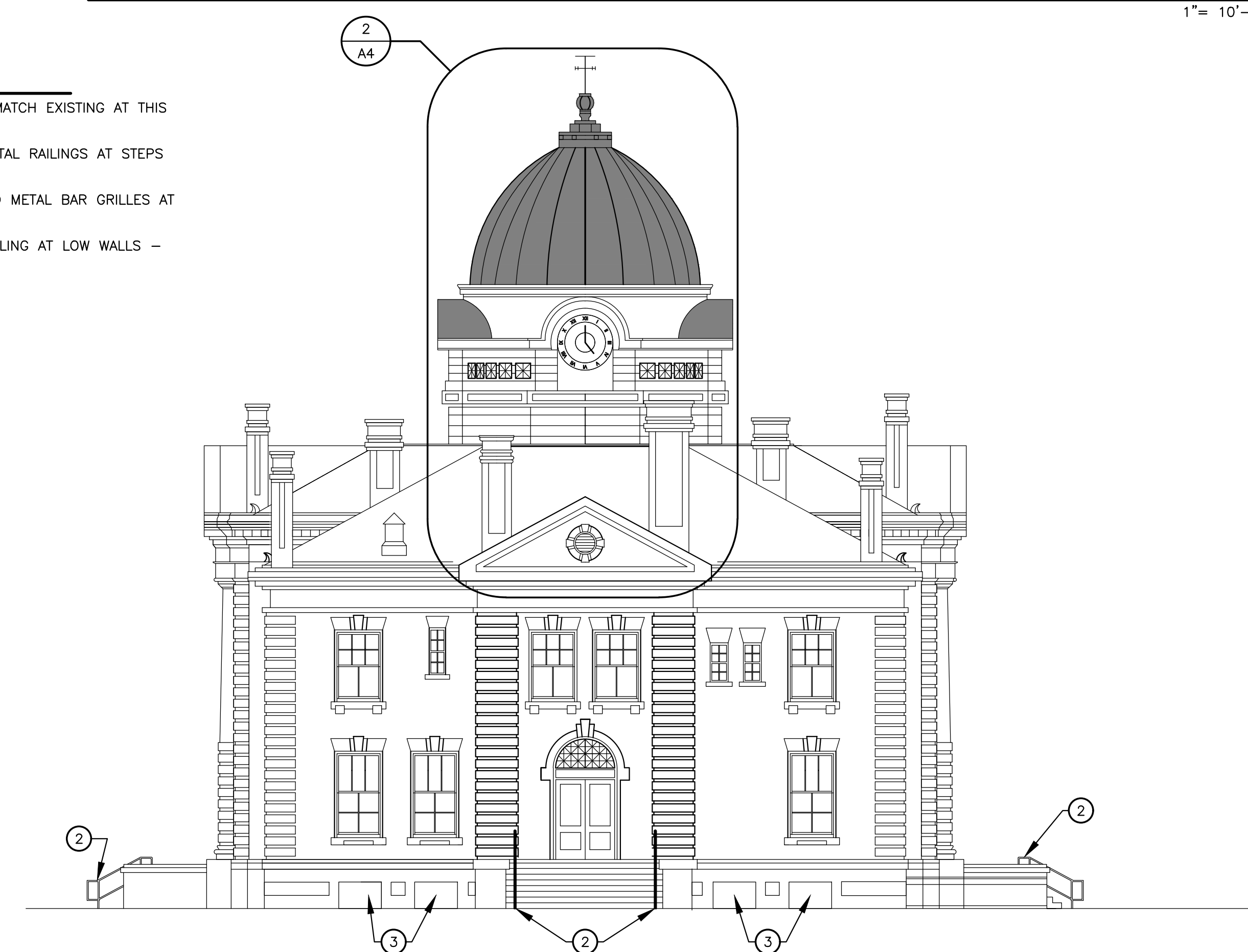
WEST ELEVATION

1" = 10'-0"



SOUTH ELEVATION

1" = 10'-0"

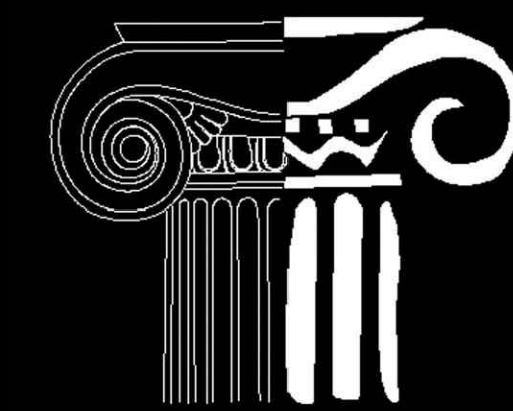


EAST ELEVATION

1" = 10'-0"

KEY NOTES:

1. PROVIDE NEW HANDRAIL WHERE MISSING TO MATCH EXISTING AT THIS LOCATION.
2. PREPARE AND PAINT PREVIOUSLY PAINTED METAL RAILINGS AT STEPS AND RAMPS - TYPICAL.
3. PREPARE AND PAINT ALL PREVIOUSLY PAINTED METAL BAR GRILLES AT GROUND FLOOR OPENINGS - TYPICAL.
4. PREPARE AND PAINT PREVIOUSLY PAINTED RAILING AT LOW WALLS - TYPICAL.



SRJ Architects Inc.

1108 Maryland Drive
Albany, Georgia 31707

Phone 229-436-9877
Fax 229-438-0370

www.srjarchitects.com

PROJECT:

EARLY COUNTY
COURTHOUSE
RENOVATIONS,
BLAKELY, GEORGIA - 1818

OWNER:

EARLY COUNTY BOARD
OF COMMISSIONERS,
204 COURT SQUARE,
BLAKELY, GEORGIA 39823



PROJECT NO.:
1818

DATE:
06/22/2018

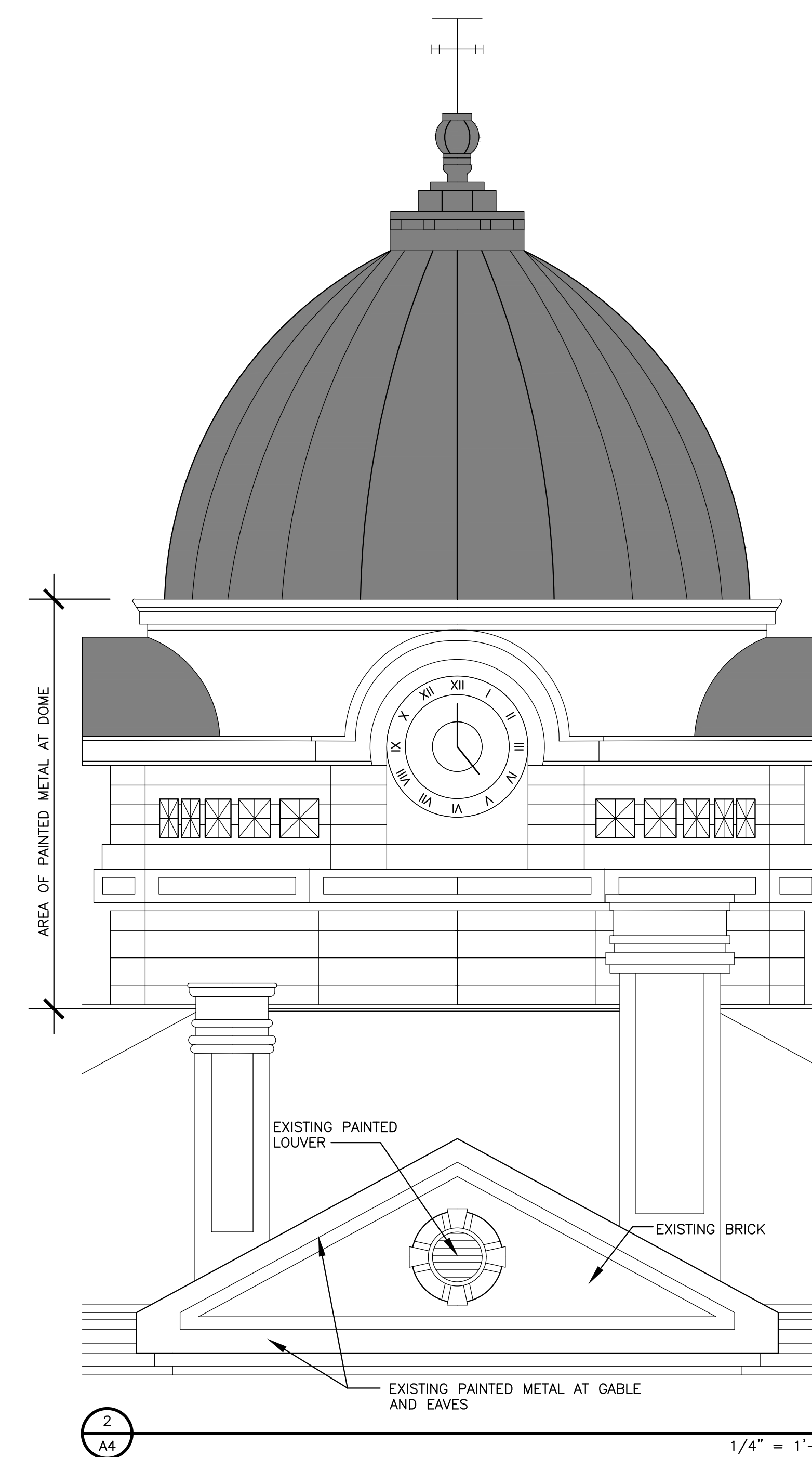
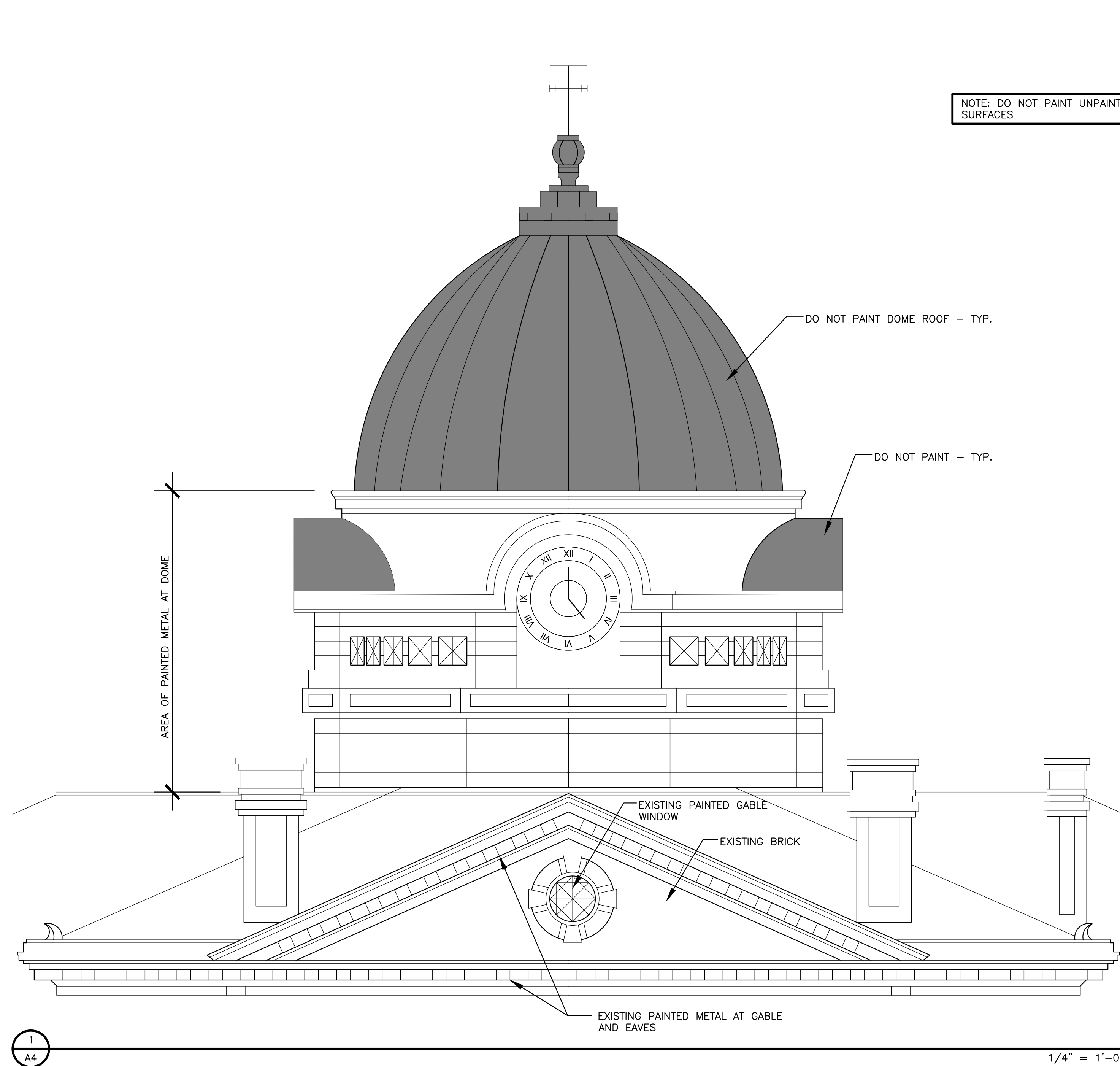
JOB CAPTAIN:
B. RICHARDS

DRAWN BY:
C. NANTZE

SHEET NO.:

A4

OF 6 SHEETS





SRJ Architects Inc.

1108 Maryland Drive
Albany, Georgia 31707

Phone 229-436-9877
Fax 229-438-0370

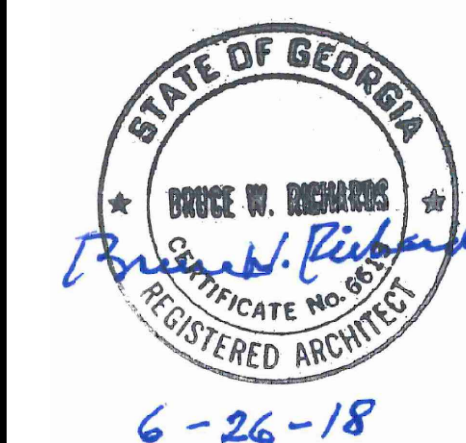
www.srjarchitects.com

PROJECT:

EARLY COUNTY
COURTHOUSE
RENOVATIONS,
BLAKELY, GEORGIA - 1818

OWNER:

EARLY COUNTY BOARD
OF COMMISSIONERS,
204 COURT SQUARE,
BLAKELY, GEORGIA 39823



PROJECT NO.:
1818

DATE:
06/22/2018

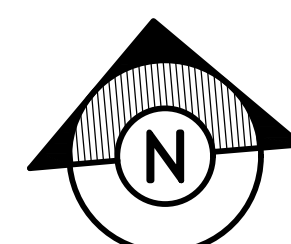
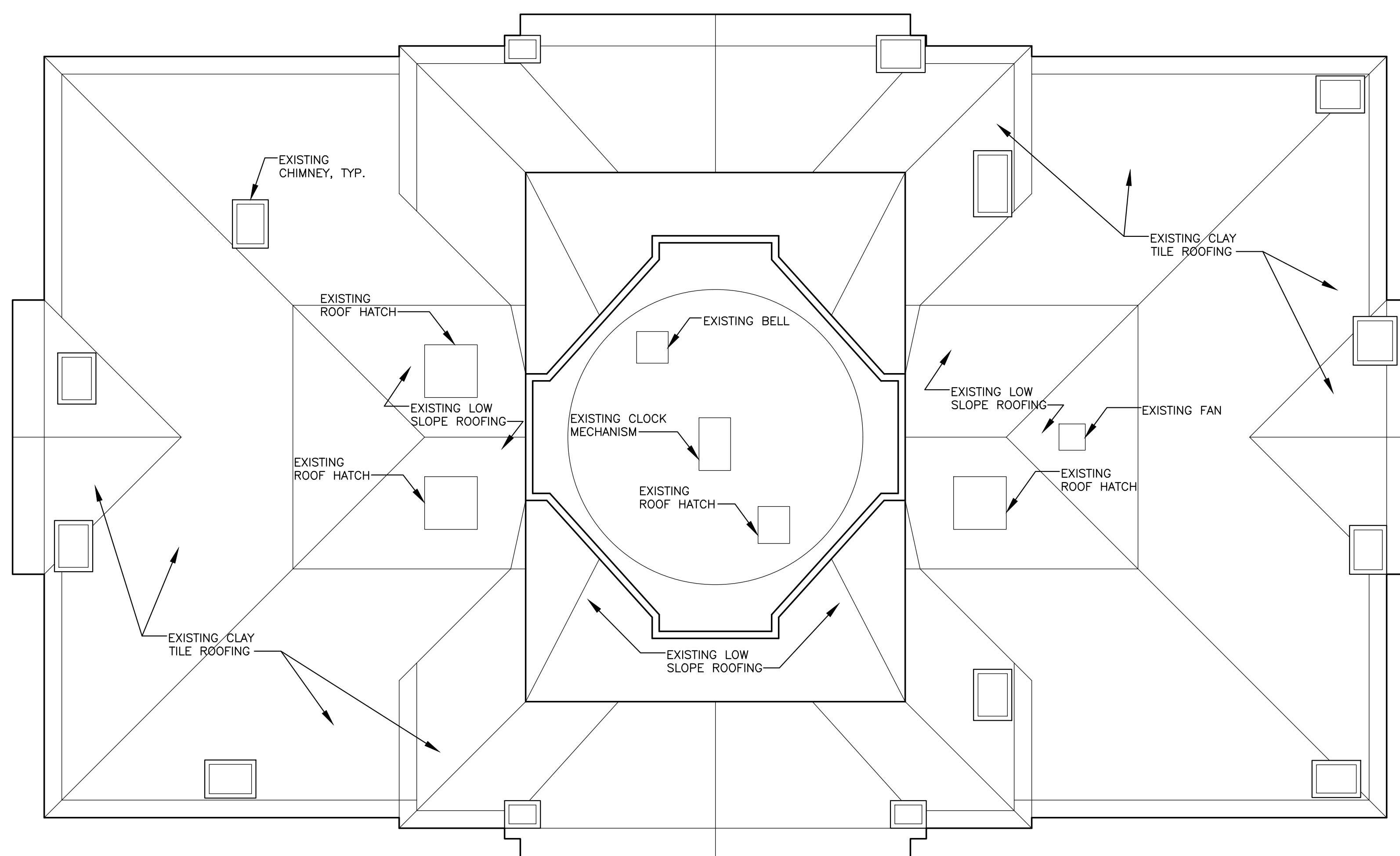
JOB CAPTAIN:
B. RICHARDS

DRAWN BY:
R. FEAGANS

SHEET NO.:

A5

OF 6 SHEETS



ROOF PLAN

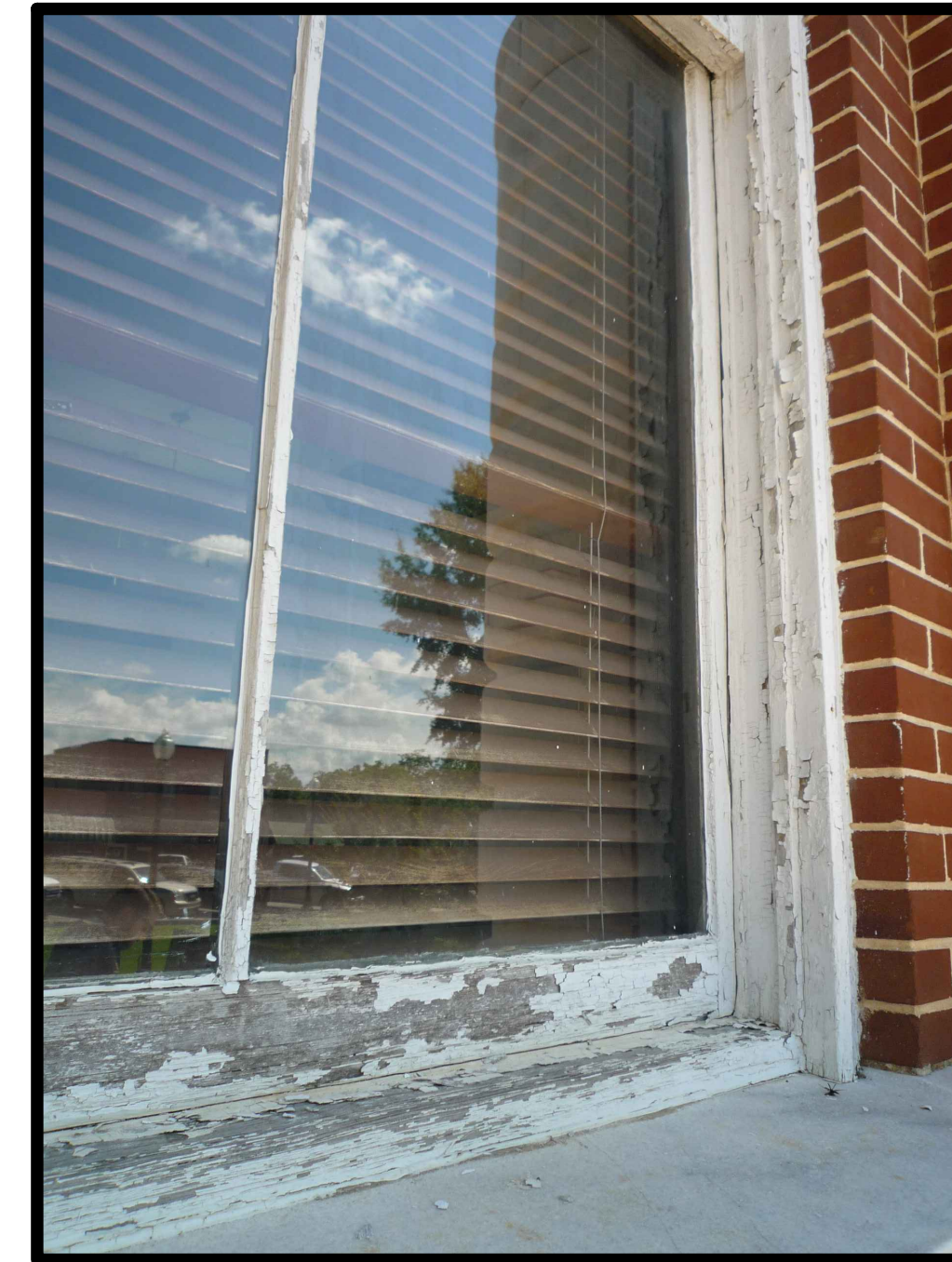
1/8" = 1'-0"



TYPICAL PAINTED METAL AT ROOF EAVE



TYPICAL PAINTED METAL AT ROOF GABLE



TYPICAL PAINTED WINDOW



TYPICAL PAINTED METAL AT ROOF EAVE



TYPICAL PAINTED METAL AT DOME



SRJ Architects Inc.

1108 Maryland Drive
Albany, Georgia 31707

Phone 229-436-9877
Fax 229-438-0370

www.srjarchitects.com

PROJECT:

EARLY COUNTY COURTHOUSE RENOVATIONS, BLAKELY, GEORGIA - 1818

OWNER:

EARLY COUNTY BOARD OF COMMISSIONERS, 204 COURT SQUARE, BLAKELY, GEORGIA 39823



PROJECT NO.: 1818

DATE: 06/22/2018

JOB CAPTAIN: B. RICHARDS

DRAWN BY: C. NANTZE

SHEET NO.:

A6

OF 6 SHEETS